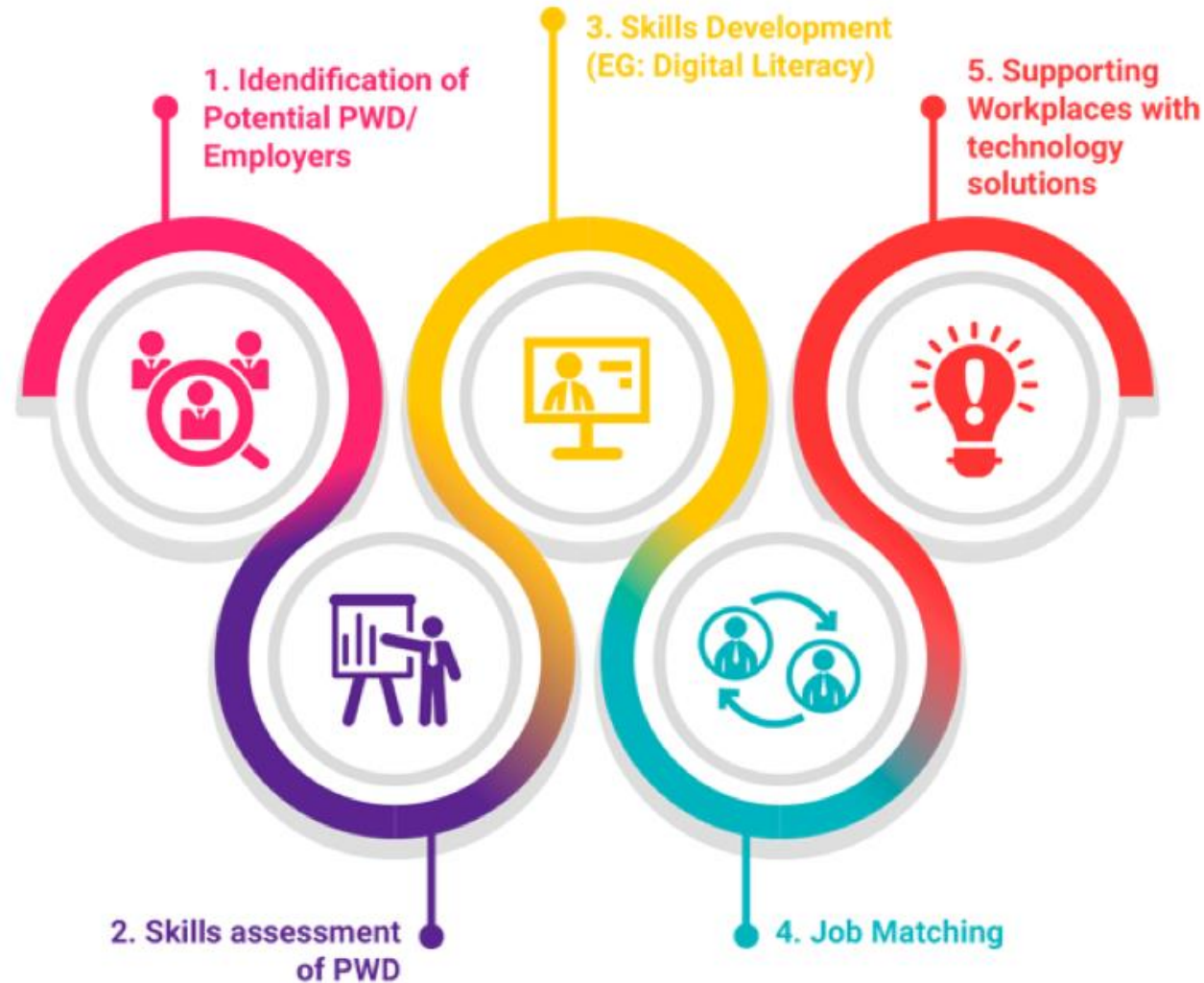


Digital Employment Pathway: supporting an inclusive economic recovery

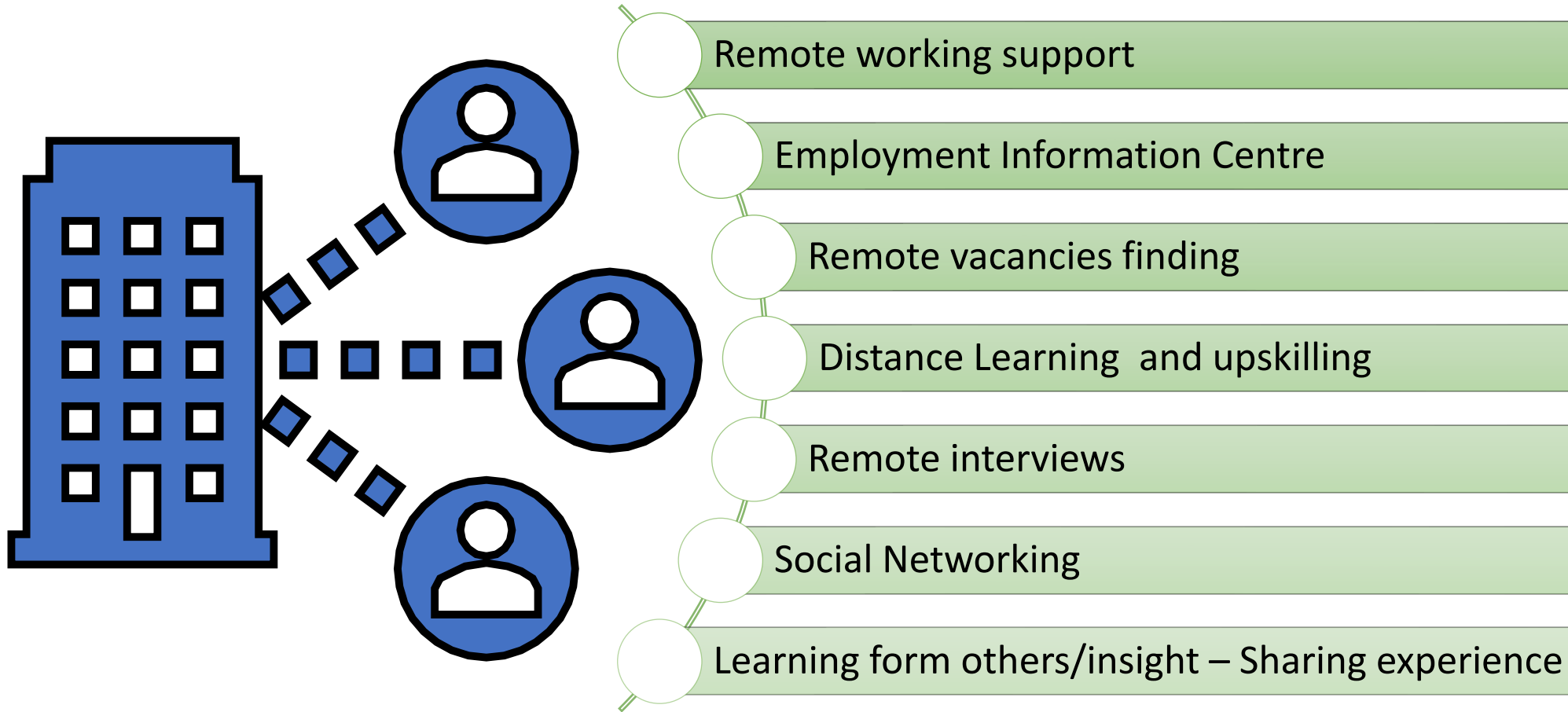


Leonard Cheshire | Action Network for the Disabled Kenya
Bangladesh Business and Disability Network | CBM | European Disability Forum
Global Disability Innovation Hub | International Labour Organization
London School of Hygiene & Tropical Medicine | Plan International | World Bank

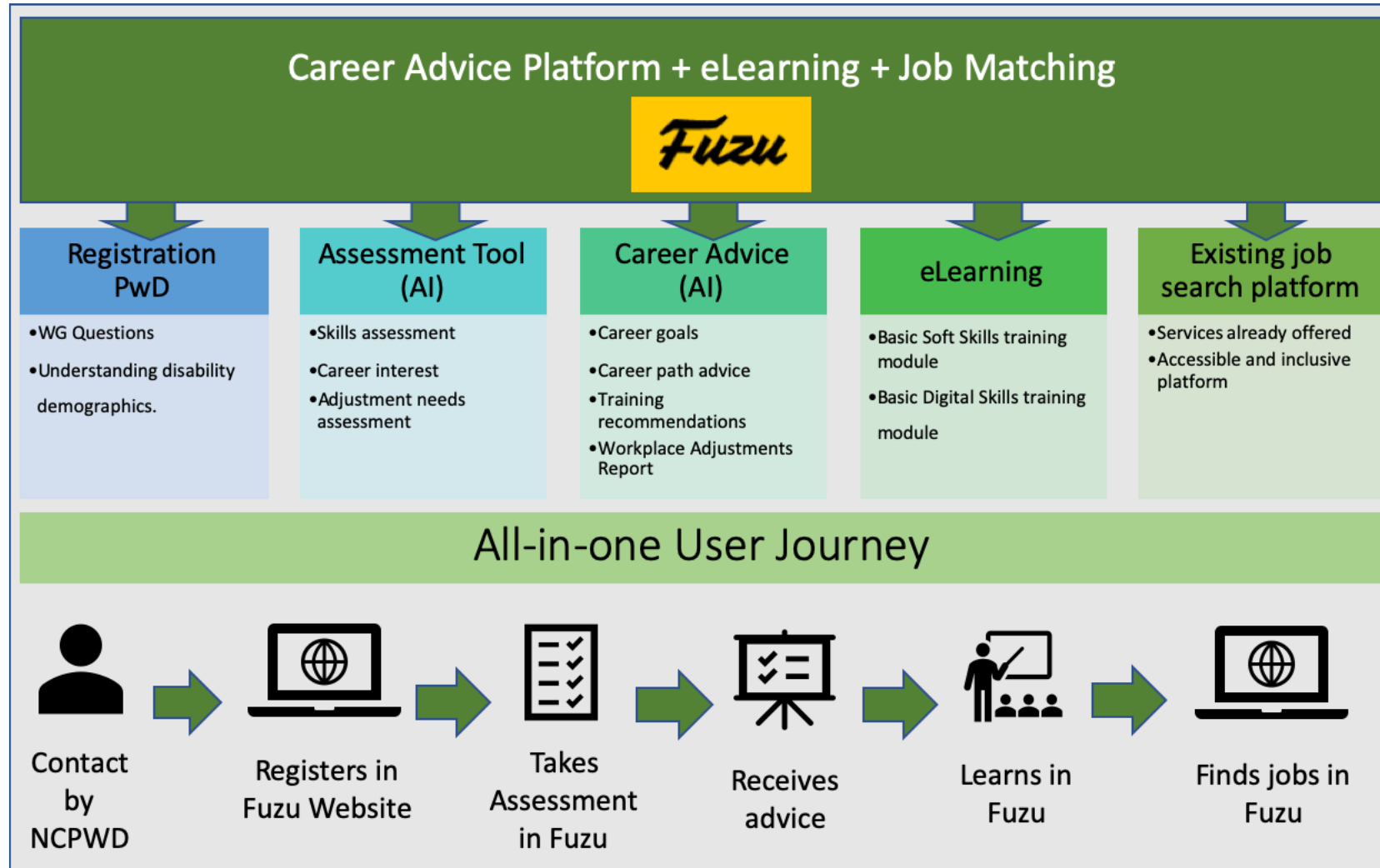
The Digital Employment Pathway (DEP) Model



The DEP even more relevant during COVID 19



In practice: The Kenya NCPWD Career Portal





**National Council for
Persons with Disabilities**

[Are you an employer?](#)

[FAQs](#)



WELCOME TO NCPWD CAREER PORTAL

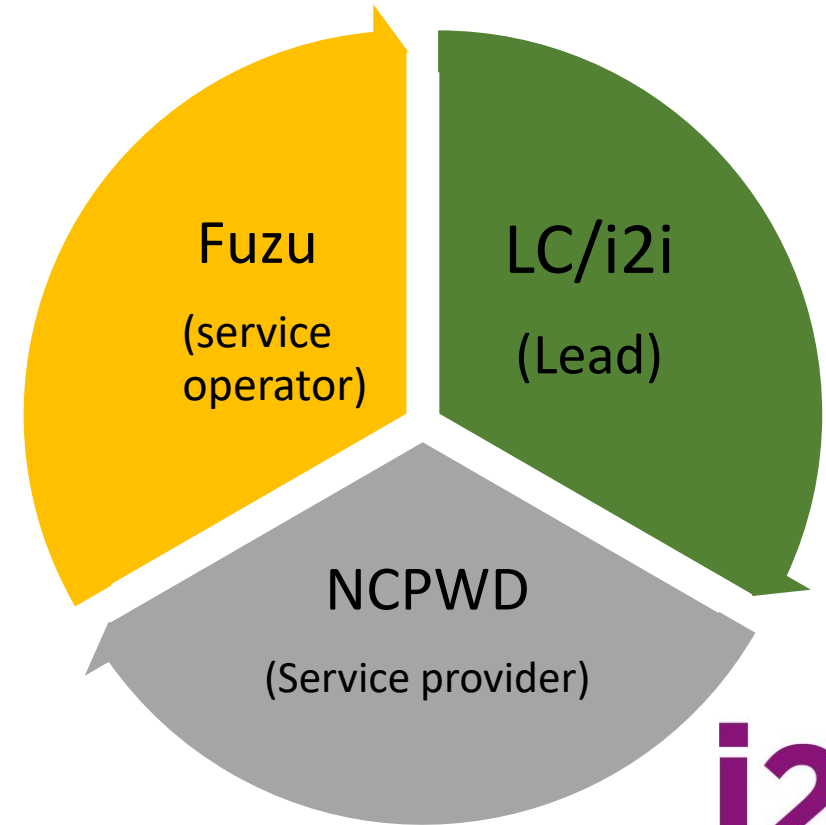
People with disabilities deserve equal opportunities. We help you build skills and find jobs.

[Register as jobseeker](#)

[Login](#)

Learnings from adapting the DEP to Kenya

- 1. Engage service users at every stage**
- 2. Public + Private Partnership for reach and sustainability**
- 3. Offering better value by working with the right experts**





For more information

contact Angel Perez: senior technology and innovation lead for i2i

Email | angel.perez@leonardcheshire.org

Leonard Cheshire | Action Network for the Disabled Kenya
Bangladesh Business and Disability Network | CBM | European Disability Forum
Global Disability Innovation Hub | International Labour Organization
London School of Hygiene & Tropical Medicine | Plan International | World Bank

Led by:



Supported by:

